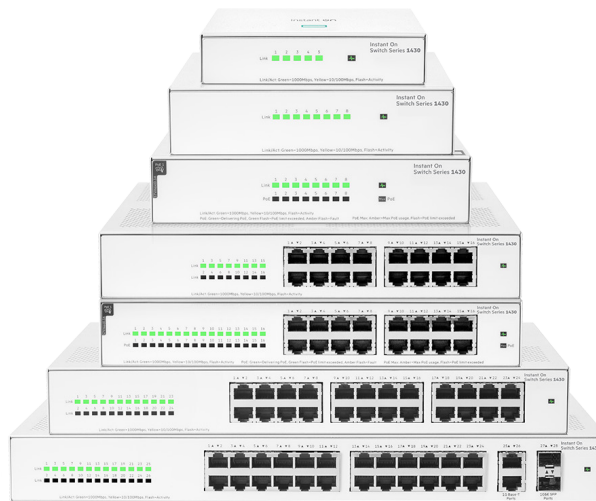


HPE Networking Instant On Switch Series 1430

Unmanaged switches designed for small business



Great for configuration and worry-free, simple networks

Product overview

Technology brings new revenue opportunities, more effective communication, and improved productivity to businesses of all sizes. Yet it also poses daily configuration and maintenance challenges, especially for small businesses who lack IT support. Smart spaces and connected offices need reliable network connectivity that's fast, configuration-free, and affordable for even the most budget-strapped businesses.

The HPE Networking Instant On Switch Series 1430 is a plug-and-play unmanaged switch series for SMBs looking for simple, reliable, and low-cost network connectivity. These easy-to-use switches deliver Layer 2 Gigabit Ethernet switching capabilities — at an affordable price point — to help connect and share common resources like printers and access points, without any complicated network configuration.

With plug-and-play operation, fully automated functions, zero ongoing maintenance, and Power-over-Ethernet (PoE) models, these switches deliver simple, reliable connectivity for the smallest SMBs and small workspaces.

The Instant On 1430 switches have seven configurations to choose from: 5-, 8-, 16-, 24-, and 26-ports, with optional PoE in the 8- or 16-port configurations. With the PoE models, you get up to 30W PoE per port power delivery for Class 4 PoE devices like access points, surveillance cameras and VoIP phones. The 8-port and 16-port PoE models come with a power budget of 64W and 124W respectively to support the latest IoT devices. The 26-port 1430 switch includes 2 SFP ports to uplink to other switches over long distances. All switches are fan-less, making them ideal for acoustically sensitive areas, and are unmanaged, requiring no configuration (not managed by Instant On management).



Highlights

- Unmanaged Layer 2 Gigabit Ethernet switch series ready to deploy in 5-, 8-, 16-, 24-, and 26-port models
- Up to 124W of PoE to power APs, IP Phones, and other IoT devices
- Plug-and-play with fully automated functions. No configuration or management needed
- Quality of Service (QoS) and flow control for improved network efficiency
- Fan-less with Energy Efficient Ethernet for low power consumption
- Class B certified for home office networks (5 and 8 port models)
- We've got you covered with industry-leading warranty and support, and 24 x 7 chat support for entire warranty period

HPE Networking Instant On differentiators

Better together

Instant On products work together to provide a seamless Wi-Fi experience. Wired and wireless voice traffic is prioritized with high QoS priority end-to-end for optimal voice performance.

Industry-leading support and warranty

Expert-level support and industry-leading limited lifetime warranty are also included, along with chat support for the life of the product.

Key switching features

Plug and play

Gigabit Ethernet speeds

Supports half/full-duplex auto-negotiating capability on access ports that doubles the throughput of every port.

Long-distance fiber connectivity

26-port model includes two 1G SFP fiber ports for uplinks and to support long-distance connectivity using fiber transceivers, for a total of 28 Ethernet ports.

Simplified cabling

Automatically adjusts for straight-through or crossover cables on all 10/100/1000 ports using Auto MDI/MDI-X.

Ethernet Alliance PSE Class 4 PoE Certification


Power-over-Ethernet (PoE) functionality is supported on two 1430 models that provide up to 30W per port, which allows support of Class 4 PoE or IEEE 802.3at-capable devices such as video IP phones, wireless access points, as well as any 15.4 W IEEE 802.3af-compliant end device, thereby eliminating the need for additional electrical cabling and circuits.

EAPoL frames forwarding

802.1x EAP over LAN frames are forwarded through the switch so that clients can authenticate when the device provides connectivity between an authenticator and supplicants.

STP BPDU frames forwarding

The switch forwards the BPDU frames to make sure that Spanning Tree Protocol works correctly preventing loops in the topology.

Brand	Standard	Class	Min. power at the PSE port	Max. power at the PD port	Wire usage	EA Certified Logo
PoE 1	IEEE 802.3 af	0-3	15.4W	13W	2 pair	
	IEEE 802.3 at	4	30W	25.5W		

Traffic optimization

Prioritize voice and video

Quality of Service provides priority of time-sensitive packets (like VoIP and video) over other traffic based on DSCP or IEEE 802.1p classification.

Flow control

Provides a flow-throttling mechanism propagated through the network to prevent packet loss at a congested node.

Jumbo frame support

Provides up to 9216 bytes frame size to improve the performance of large data transfers.

Energy efficiency

Energy Efficient Ethernet (EEE)

Compliant with 802.3az standard requirements to save energy during periods of low data activity.

Fan-less operation

Requires less power to operate and enables quiet operation in acoustically sensitive environments.



Warranty, service and support

Instant On Limited Lifetime Support provides 24X7 phone support for the first 90 days and chat support for the entire warranty period. Next Business Day hardware replacement is also included for the first 30 days. Upgrade to unlimited phone and chat support with our optional Foundation Care.

The Instant On community is also a resource to use for public crowd-sourced support or configuration questions.

Refer to the [EoS Policy](#) for more details on EoS terms and conditions.

Refer to the Hewlett Packard Enterprise website at hpe.com/networking/services for details on the service-objective descriptions and product numbers. For details about services and targeted response times in your area, please contact your local Hewlett Packard Enterprise sales office.



Technical specifications

	HPE Networking Instant On Switch 5p Gigabit 1430 (R8R44A)	HPE Networking Instant On Switch 8p Gigabit 1430 (R8R45A)	HPE Networking Instant On Switch 8p Gigabit CL4 PoE 64W 1430 (R8R46A)	HPE Networking Instant On Switch 16p Gigabit 1430 (R8R47A)
I/O ports and slots				
	5 RJ-45 autosensing 10/100/1000 ports (IEEE 802.3 Type 10BASE-T, IEEE 802.3u Type 100BASE-TX, IEEE 802.3ab Type 1000BASE-T); Duplex: 10BASE-T/100BASE-TX: half or full; 1000BASE-T: full only	8 RJ-45 autosensing 10/100/1000 ports (IEEE 802.3 Type 10BASE-T, IEEE 802.3u Type 100BASE-TX, IEEE 802.3ab Type 1000BASE-T); Duplex: 10BASE-T/100BASE-TX: half or full; 1000BASE-T: full only	8 RJ-45 autosensing 10/100/1000 Class 4 PoE ports (IEEE 802.3 Type 10BASE-T, IEEE 802.3u Type 100BASE-TX, IEEE 802.3ab Type 1000BASE-T); Duplex: 10BASE-T/100BASE-TX: half or full; 1000BASE-T: full only	16 RJ-45 autosensing 10/100/1000 ports (IEEE 802.3 Type 10BASE-T, IEEE 802.3u Type 100BASE-TX, IEEE 802.3ab Type 1000BASE-T); Duplex: 10BASE-T/100BASE-TX: half or full; 1000BASE-T: full only
Physical characteristics				
Dimensions (D x W x H)	3.66 x 4.56 x 1.02 in (9.3 x 11.6 x 2.6 cm)	5.43 x 6.18 x 1.45 in (13.8 x 15.7 x 3.7 cm)	5.91 x 6.96 x 1.45 in (15 x 17.7 x 3.7 cm)	10.16 x 10.83 x 1.72 in (25.8 x 27.5 x 4.4 cm)
Weight	0.60 lb (0.27 kg)	1.30 lb (0.59 kg)	1.70 lb (0.77 kg)	3.80 lb (0.172 kg)
Processor and memory				
	2Kb EEPROM; Packet buffer size: 1.0 Mb	128Kb EEPROM; Packet buffer size: 2.0 Mb	128Kb EEPROM; Packet buffer size: 2.0 Mb	128Kb EEPROM; Packet buffer size: 2.0 Mb
Performance				
100 Mb latency	< 3.81 µSec	< 2.7 µSec	< 2.7 µSec	< 2.7 µSec
1000 Mb latency	< 0.93 µSec	< 1.80 µSec	< 1.80 µSec	< 1.80 µSec
Throughput (Mpps)	7.44 Mpps	11.90 Mpps	11.90 Mpps	23.80 Mpps
Capacity	10 Gbps	16 Gbps	16 Gbps	32 Gbps
MAC address table size	8192 entries	8192 entries	8192 entries	8192 entries
Reliability MTBF (years)	525.8	416.2	131.1	269.8
Environment				
Operating temperature	32°F to 104°F (0°C to 40°C)	32°F to 104°F (0°C to 40°C)	32°F to 104°F (0°C to 40°C)	32°F to 104°F (0°C to 40°C)
Operating relative humidity	15% to 95% @ 104°F (40°C) non-condensing	15% to 95% @ 104°F (40°C) non-condensing	15% to 95% @ 104°F (40°C) non-condensing	15% to 95% @ 104°F (40°C) non-condensing
Nonoperating/storage temperature	-40°F to 158°F (-40°C to 70°C) up to 15000 ft	-40°F to 158°F (-40°C to 70°C) up to 15000 ft	-40°F to 158°F (-40°C to 70°C) up to 15000 ft	-40°F to 158°F (-40°C to 70°C) up to 15000 ft
Nonoperating/storage relative humidity	15% to 95% @ 149°F (65°C) non-condensing	15% to 95% @ 149°F (65°C) non-condensing	15% to 95% @ 149°F (65°C) non-condensing	15% to 95% @ 149°F (65°C) non-condensing
Altitude	up to 10,000 ft (3 km)	up to 10,000 ft (3 km)	up to 10,000 ft (3 km)	up to 10,000 ft (3 km)
Acoustics				
	Fanless	Fanless	Fanless	Fanless



Technical specifications

	HPE Networking Instant On Switch 16p Gigabit CL4 PoE 124W 1430 (R8R48A)	HPE Networking Instant On Switch 24p Gigabit 1430 (R8R49A)	HPE Networking Instant On Switch 26p Gigabit 2p SFP 1430 (R8R50A)
I/O ports and slots			
	16 RJ-45 autosensing 10/100/1000 Class 4 PoE ports (IEEE 802.3 Type 10BASE-T, IEEE 802.3u Type 100BASE-TX, IEEE 802.3ab Type 1000BASE-T); Duplex: 10BASE-T/100BASE-TX: half or full; 1000BASE-T: full only	24 RJ-45 autosensing 10/100/1000 ports (IEEE 802.3 Type 10BASE-T, IEEE 802.3u Type 100BASE-TX, IEEE 802.3ab Type 1000BASE-T); Duplex: 10BASE-T/100BASE-TX: half or full; 1000BASE-T: full only	26 RJ-45 autosensing 10/100/1000 ports (IEEE 802.3 Type 10BASE-T, IEEE 802.3u Type 100BASE-TX, IEEE 802.3ab Type 1000BASE-T); Duplex: 10BASE-T/100BASE-TX: half or full; 1000BASE-T: full only 2 SFP 1GbE ports
Physical characteristics			
Dimensions (D x W x H)	10.23 x 10.83 x 1.72 in (26 x 27.5 x 4.4 cm)	8.86 x 13.38 x 1.72 in (22.5 x 34 x 4.4 cm)	8.85 x 15.27 x 1.72 in (22.5 x 38.8 x 4.4 cm)
Weight	4.60 lb (2.09 kg)	4.20 lb (1.91 kg)	5.00 lb (2.27 kg)
Processor and memory			
	128Kb EEPROM; Packet buffer size: 2.0 Mb	128Kb EEPROM; Packet buffer size: 2.0 Mb	32Mb Flash; Packet buffer size: 12.0 Mb
Performance			
100 Mb latency	< 2.7 µSec	< 2.7 µSec	< 5.21 µSec
1000 Mb latency	< 1.80 µSec	< 1.80 µSec	> 2.90 µSec
Throughput (Mpps)	23.80 Mpps	35.71 Mpps	41.68 Mpps
Capacity	32 Gbps	48 Gbps	56 Gbps
MAC address table size	8192 entries	8192 entries	16384 entries
Reliability MTBF (years)	126.1	199.5	171.9
Environment			
Operating temperature	32°F to 104°F (0°C to 40°C)	32°F to 104°F (0°C to 40°C)	32°F to 104°F (0°C to 40°C)
Operating relative humidity	15% to 95% @ 104°F (40°C) non-condensing	15% to 95% @ 104°F (40°C) non-condensing	15% to 95% @ 104°F (40°C) non-condensing
Nonoperating/storage temperature	-40°F to 158°F (-40°C to 70°C) up to 15000 ft	-40°F to 158°F (-40°C to 70°C) up to 15000 ft	-40°F to 158°F (-40°C to 70°C) up to 15000 ft
Nonoperating/storage relative humidity	15% to 95% @ 149°F (65°C) non-condensing	15% to 95% @ 149°F (65°C) non-condensing	15% to 95% @ 149°F (65°C) non-condensing
Altitude	up to 10,000 ft (3 km)	up to 10,000 ft (3 km)	up to 10,000 ft (3 km)
Acoustics			
	Fanless	Fanless	Fanless



Technical specifications

	HPE Networking Instant On Switch 5p Gigabit 1430 (R8R44A)	HPE Networking Instant On Switch 8p Gigabit 1430 (R8R45A)	HPE Networking Instant On Switch 8p Gigabit CL4 PoE 64W 1430 (R8R46A)	HPE Networking Instant On Switch 16p Gigabit 1430 (R8R47A)
Electrical characteristics				
Frequency	50Hz/60Hz	50Hz/60Hz	50Hz/60Hz	50Hz/60Hz
AC voltage	100-240VAC	100-240VAC	100-240VAC	100-127VAC / 200-240VAC
Current	0.3A (12VDC - 1A)	0.3A (12VDC - 1A)	2A (54VDC - 1.58A)	0.2A/0.2A
Maximum power rating	12W	12W	90W	7.9W
Idle power	1W	1.7W	4.1W	2.3W
PoE power	—	—	64W Class 4 PoE	—
Power supply	External power adapter	External power adapter	External power adapter	Internal power supply
Safety				
	EN/IEC 60950-1:2006 + A11:2009 + A1:2010 + A12:2011 + A2:2013	EN/IEC 60950-1:2006 + A11:2009 + A1:2010 + A12:2011 + A2:2013	EN/IEC 60950-1:2006 + A11:2009 + A1:2010 + A12:2011 + A2:2013	EN/IEC 60950-1:2006 + A11:2009 + A1:2010 + A12:2011 + A2:2013
	EN/IEC 62368-1, 2nd. & 3rd. Ed.	EN/IEC 62368-1, 2nd. & 3rd. Ed.	EN/IEC 62368-1, 2nd. & 3rd. Ed.	EN/IEC 62368-1, 2nd. & 3rd. Ed.
	UL 62368-1, 3rd. Ed.	UL 62368-1, 3rd. Ed.	UL 62368-1, 3rd. Ed.	UL 62368-1, 3rd. Ed.
	CAN/CSA C22.2 No. 62368-1, 3rd. Ed.	CAN/CSA C22.2 No. 62368-1, 3rd. Ed.	CAN/CSA C22.2 No. 62368-1, 3rd. Ed.	CAN/CSA C22.2 No. 62368-1, 3rd. Ed.
	EN/IEC 60825- 1:2018	EN/IEC 60825- 1:2018	EN/IEC 60825- 1:2018	EN/IEC 60825- 1:2018
Emissions				
	EN 55032:2015/CISPR 32, Class B	EN 55032:2015/CISPR 32, Class B	EN 55032:2015/CISPR 32, Class B	EN 55032:2015/CISPR 32, Class A
	FCC CFR 47 Part 15: 2018, Class B	FCC CFR 47 Part 15: 2018, Class B	FCC CFR 47 Part 15: 2018, Class B	FCC CFR 47 Part 15: 2018, Class A
	CES-003, Class B	ICES-003, Class B	ICES-003, Class B	ICES-003, Class A
	VCCI-32, Class B	VCCI-32, Class B	VCCI-32, Class B	VCCI-32, Class A
	CNS 13438, Class B	CNS 13438, Class B	CNS 13438, Class B	CNS 13438, Class A
	KS C 9832, Class B	KS C 9832, Class B	KS C 9832, Class B	KS C 9832, Class A
	AS/NZS CISPR 32, Class B	AS/NZS CISPR 32, Class B	AS/NZS CISPR 32, Class B	AS/NZS CISPR 32, Class A



Technical specifications

	HPE Networking Instant On Switch 16p Gigabit CL4 PoE 124W 1430 (R8R48A)	HPE Networking Instant On Switch 24p Gigabit 1430 (R8R49A)	HPE Networking Instant On Switch 26p Gigabit 2p SFP 1430 (R8R50A)
Electrical characteristics			
Frequency	50Hz/60Hz	50Hz/60Hz	50Hz/60Hz
AC voltage	100-127VAC / 200-240VAC	100-127VAC / 200-240VAC	100-127VAC / 200-240VAC
Current	1.7A / 0.8A	0.3A / 0.2A	0.4A / 0.3A
Maximum power rating	147W	11.7W	16.4W
Idle power	5W	3.2W	8W
PoE power	124W Class 4 PoE	—	—
Power supply	Internal power supply	Internal power supply	Internal power supply
Safety			
	EN/IEC 60950-1:2006 + A11:2009 + A1:2010 + A12:2011 + A2:2013 EN/IEC 62368-1, 2nd. & 3rd. Ed. UL 62368-1, 3rd. Ed. CAN/CSA C22.2 No. 62368-1, 3rd. Ed. EN/IEC 60825- 1:2018	EN/IEC 60950-1:2006 + A11:2009 + A1:2010 + A12:2011 + A2:2013 EN/IEC 62368-1, 2nd. & 3rd. Ed. UL 62368-1, 3rd. Ed. CAN/CSA C22.2 No. 62368-1, 3rd. Ed. EN/IEC 60825- 1:2018	EN/IEC 60950-1:2006 + A11:2009 + A1:2010 + A12:2011 + A2:2013 EN/IEC 62368-1, 2nd. & 3rd. Ed. UL 62368-1, 3rd. Ed. CAN/CSA C22.2 No. 62368-1, 3rd. Ed. EN/IEC 60825- 1:2018
Emissions			
	EN 55032:2015/CISPR 32, Class A FCC CFR 47 Part 15: 2018, Class A ICES-003, Class A VCCI-32, Class A CNS 13438, Class A KS C 9832, Class A AS/NZS CISPR 32, Class A	EN 55032:2015/CISPR 32, Class A FCC CFR 47 Part 15: 2018, Class A ICES-003, Class A VCCI-32, Class A CNS 13438, Class A KS C 9832, Class A AS/NZS CISPR 32, Class A	EN 55032:2015/CISPR 32, Class A FCC CFR 47 Part 15: 2018, Class A ICES-003, Class A VCCI-32, Class A CNS 13438, Class A KS C 9832, Class A AS/NZS CISPR 32, Class A



Technical specifications

	HPE Networking Instant On Switch 5p Gigabit 1430 (R8R44A)	HPE Networking Instant On Switch 8p Gigabit 1430 (R8R45A)	HPE Networking Instant On Switch 8p Gigabit CL4 PoE 64W 1430 (R8R46A)	HPE Networking Instant On Switch 16p Gigabit 1430 (R8R47A)
Immunity				
Generic	BS/EN 55035, CISPR 35, KS C 9835	BS/EN 55035, CISPR 35, KS C 9835	BS/EN 55035, CISPR 35, KS C 9835	BS/EN 55035, CISPR 35, KS C 9835
EN	EN 55035, CISPR 35	EN 55035, CISPR 35	EN 55035, CISPR 35	EN 55035, CISPR 35
ESD	EN/IEC 61000-4-2	EN/IEC 61000-4-2	EN/IEC 61000-4-2	EN/IEC 61000-4-2
Radiated	EN/IEC 61000-4-3	EN/IEC 61000-4-3	EN/IEC 61000-4-3	EN/IEC 61000-4-3
EFT/Burst	EN/IEC 61000-4-4	EN/IEC 61000-4-4	EN/IEC 61000-4-4	EN/IEC 61000-4-4
Surge	EN/IEC 61000-4-5	EN/IEC 61000-4-5	EN/IEC 61000-4-5	EN/IEC 61000-4-5
Conducted	EN/IEC 61000-4-6	EN/IEC 61000-4-6	EN/IEC 61000-4-6	EN/IEC 61000-4-6
Power frequency magnetic field	EN/IEC 61000-4-8	EN/IEC 61000-4-8	EN/IEC 61000-4-8	EN/IEC 61000-4-8
Voltage dips and interruptions	EN/IEC 61000-4-11	EN/IEC 61000-4-11	EN/IEC 61000-4-11	EN/IEC 61000-4-11
Harmonics	EN/IEC 61000-3-2	EN/IEC 61000-3-2	EN/IEC 61000-3-2	EN/IEC 61000-3-2
Flicker	EN /IEC 61000-3-3	EN /IEC 61000-3-3	EN /IEC 61000-3-3	EN /IEC 61000-3-3
Device management				
	Unmanaged	Unmanaged	Unmanaged	Unmanaged
Mounting				
Mounting positions and supported racking	Supports table-top mounting Supports wall-mounting with ports facing either up or down using base surface mounting holes Supports under-table mounting using base surface mounting holes	Supports table-top mounting Supports wall-mounting with ports facing either up or down using base surface mounting holes Supports under-table mounting using base surface mounting holes	Mounts in an EIA standard 19 in telco rack or equipment cabinet. 2-post rack kit included Supports table-top mounting Supports rack-mounting using the brackets provided Supports wall-mounting with ports facing either up or down using either the base surface mounting holes, or the brackets provided Supports under-table mounting using the brackets provided Must be mounted top surface up. To prevent possible impact to long-term reliability, product should not be mounted upside-down	Mounts in an EIA standard 19 in telco rack or equipment cabinet. 2-post rack kit included Supports table-top mounting Supports rack-mounting using the brackets provided Supports wall-mounting with ports facing either up or down using either the base surface mounting holes, or the brackets provided Supports under-table mounting using the brackets provided Must be mounted top surface up. To prevent possible impact to long-term reliability, product should not be mounted upside-down
Transceivers				
	—	—	—	—



Technical specifications

	HPE Networking Instant On Switch 16p Gigabit CL4 PoE 124W 1430 (R8R48A)	HPE Networking Instant On Switch 24p Gigabit 1430 (R8R49A)	HPE Networking Instant On Switch 26p Gigabit 2p SFP 1430 (R8R50A)
Immunity			
Generic	BS/EN 55035, CISPR 35, KS C 9835	BS/EN 55035, CISPR 35, KS C 9835	BS/EN 55035, CISPR 35, KS C 9835
EN	EN 55035, CISPR 35	EN 55035, CISPR 35	EN 55035, CISPR 35
ESD	EN/IEC 61000-4-2	EN/IEC 61000-4-2	EN/IEC 61000-4-2
Radiated	EN/IEC 61000-4-3	EN/IEC 61000-4-3	EN/IEC 61000-4-3
EFT/Burst	EN/IEC 61000-4-4	EN/IEC 61000-4-4	EN/IEC 61000-4-4
Surge	EN/IEC 61000-4-5	EN/IEC 61000-4-5	EN/IEC 61000-4-5
Conducted	EN/IEC 61000-4-6	EN/IEC 61000-4-6	EN/IEC 61000-4-6
Power frequency magnetic field	EN/IEC 61000-4-8	EN/IEC 61000-4-8	EN/IEC 61000-4-8
Voltage dips and interruptions	EN/IEC 61000-4-11	EN/IEC 61000-4-11	EN/IEC 61000-4-11
Harmonics	EN/IEC 61000-3-2	EN/IEC 61000-3-2	EN/IEC 61000-3-2
Flicker	EN /IEC 61000-3-3	EN /IEC 61000-3-3	EN /IEC 61000-3-3
Device management			
	Unmanaged	Unmanaged	Unmanaged
Mounting			
	Mounts in an EIA standard 19 in telco rack or equipment cabinet. 2-post rack kit included	Mounts in an EIA standard 19 in telco rack or equipment cabinet. 2-post rack kit included	Mounts in an EIA standard 19 in telco rack or equipment cabinet. 2-post rack kit included
	Supports table-top mounting	Supports table-top mounting	Supports table-top mounting
	Supports rack-mounting using the brackets provided	Supports rack-mounting using the brackets provided	Supports rack-mounting using the brackets provided
	Supports wall-mounting with ports facing either up or down using either the base surface mounting holes, or the brackets provided	Supports wall-mounting with ports facing either up or down using either the base surface mounting holes, or the brackets provided	Supports wall-mounting with ports facing either up or down using either the base surface mounting holes, or the brackets provided
	Supports under-table mounting using the brackets provided	Supports under-table mounting using the brackets provided	Supports under-table mounting using the brackets provided
	Must be mounted top surface up. To prevent possible impact to long-term reliability, product should not be mounted upside-down	Must be mounted top surface up. To prevent possible impact to long-term reliability, product should not be mounted upside-down	Must be mounted top surface up. To prevent possible impact to long-term reliability, product should not be mounted upside-down
Transceivers			
	—	—	HPE Networking Instant On 1G SFP LC LX 10km SMF Transceiver (S0G20A) HPE Networking Instant On 1G SFP LC SX 500m OM2 MMF Transceiver (R9D16A) View the Transceiver Guide



Standards and protocols

(Applies to all product in series)

General protocols

IEEE 802.3i	10 Mbps Ethernet
IEEE 802.3u	100Base-T Ethernet
IEEE 802.3z	1000 Mbps Ethernet
IEEE 802.3ab	1000Base-T
IEEE 802.3af	PoE1 (PoE models only)
IEEE 802.3at	PoE1 (PoE models only)
IEEE 802.3x	Flow control
IEEE 802.3az	Energy Efficient Ethernet
RFC 2474	QoS diffserv (DSCP) mapping



Ordering information

HPE Networking Instant On Switch Series 1430

Part number	Description	Ports	Uplink ports	Class 4 PoE power budget
R8R44A	HPE Networking Instant On Switch 5p Gigabit 1430	5	–	–
R8R45A	HPE Networking Instant On Switch 8p Gigabit 1430	8	–	–
R8R46A	HPE Networking Instant On Switch 8p Gigabit CL4 PoE 64W 1430	8	–	64W
R8R47A	HPE Networking Instant On Switch 16p Gigabit 1430	16	–	–
R8R48A	HPE Networking Instant On Switch 16p Gigabit CL4 PoE 124W 1430	16	–	124W
R8R49A	HPE Networking Instant On Switch 24p Gigabit 1430	24	–	–
R8R50A	HPE Networking Instant On Switch 26p Gigabit 2p SFP 1430	26	2 SFP	–

Support options

Product SKU	Support SKU	Support SKU description
R8R44A	H36PQE	HPE Aruba Networking Foundational Care 3Y NBD Exch IOn 1430 5G Switch SVC
R8R45A	H36PSE	HPE Aruba Networking Foundational Care 3Y NBD Exch IOn 1430 8G Switch SVC
R8R46A	H36PVE	HPE Aruba Networking Foundational Care 3Y NBD Exch IOn 1430 8G Class4 PoE 64W Switch SVC
R8R47A	H36PXE	HPE Aruba Networking Foundational Care 3Y NBD Exch IOn 1430 16G Switch SVC
R8R48A	H36PZE	HPE Aruba Networking Foundational Care 3Y NBD Exch IOn 1430 16G Class4 PoE 124W Switch SVC
R8R49A	H36QCE	HPE Aruba Networking Foundational Care 3Y NBD Exch IOn 1430 24G Switch SVC
R8R50A	H36QFE	HPE Aruba Networking Foundational Care 3Y NBD Exch IOn 1430 26G 2SFP Switch SVC

(Go to [Support Services Central](#) to locate Foundation Care SKUs for switches.)